



Beyond ADA: Multigenerational Public Restroom Design

*An Introduction to Accommodation Solutions
from Bobrick & Koala Kare*



BUILDING VALUE SINCE 1906



A free copy of this guide is available at bobrick.com

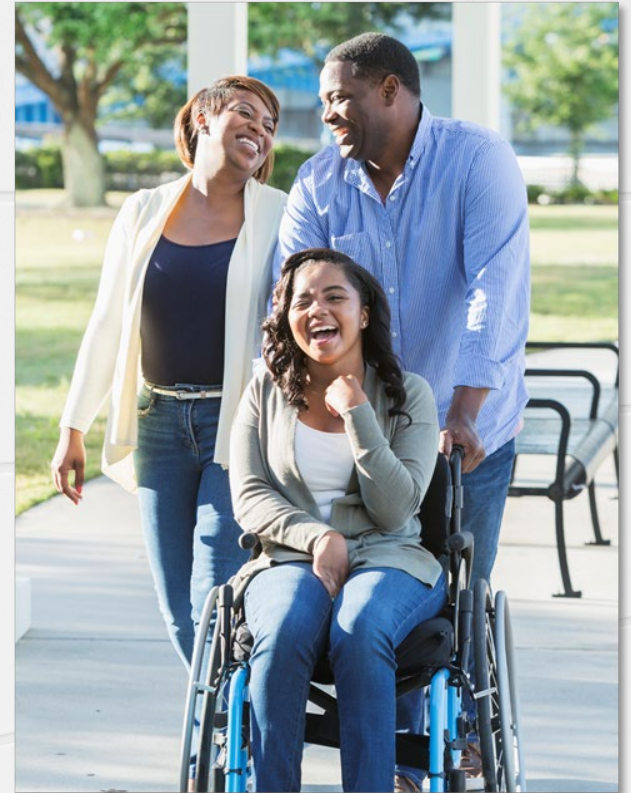
Driving Factors

- Multigenerational demographic shifts
 - 64 million Americans now live in multigenerational households
 - 20% of Americans are working past age 65
 - Millennials now represent about 35% of the workforce
 - Parents are spending twice as much time with their children as they did 50 years ago.



Incentives for Universal Design

- Benefits
 - Collaboration among more people
 - Political support/community building
 - Active, safe, connected citizens
 - More satisfied patrons
 - Tax and/or government incentives



Know Your Users

- Some building types may require exceeding ADA requirements
- For example, mobility scooter users require larger turning radiuses
- Will any of these user types use the facility?
 - Children
 - The elderly
 - Special needs users
 - Caregivers
 - Pregnant or nursing mothers
 - Transgender individuals
 - Obese users

Redefining Restroom Design

- User needs drive the development of sustainable, hygienic products
- COVID-19 sensitivities influence hygiene- and wellness-driven design strategies
- Diabetics/nursing mothers' needs, and cultural diversity drive privacy solutions



A New Standard for Privacy

- Influenced by evolving needs and preferences:
 - Health issues
 - Personal preference
 - Transgender population
- Privacy now accessible for mid-range projects as well as prestige
- U.S. catching up to international privacy options



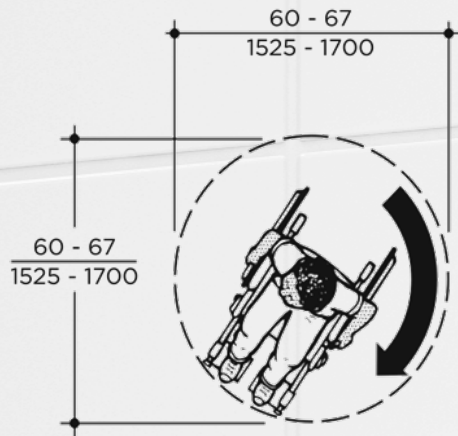
Exceeding ADA Requirements

- Exceed minimum dimensions
- Modified space allocation, layouts and paths of travel
- Additional amenities to support those with physical limitations

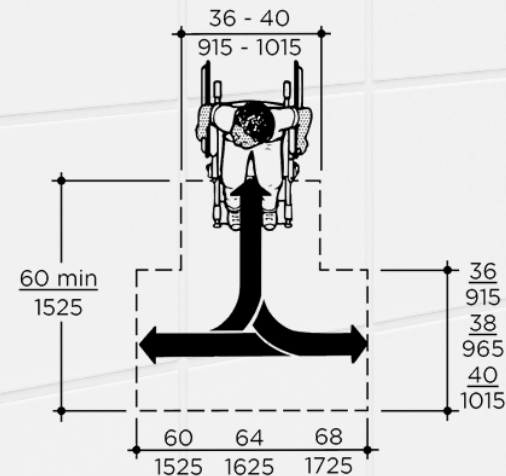


Turning Spaces

- Circular turning space
 - Allows 180-degree or 360-degree turn
- T-shaped turning space
 - Allows 3-point turn
 - Can conserve space
- Portion of 60" space can be under fixtures, lavatories or accessories as long as knee and toe clearance is provided.



Circular Turning Space

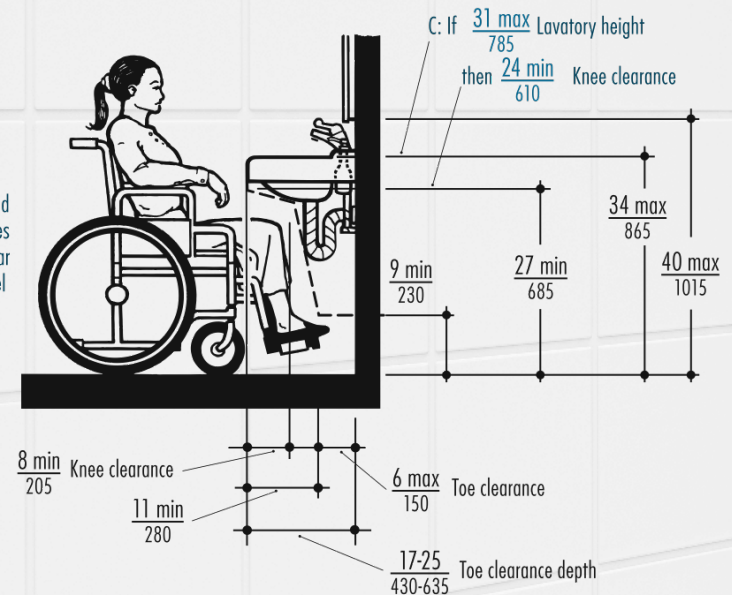


T-Shaped Turning Space

Clear Floor Space

- Clear floor space in front and under lavatory:
 - 2010 ADA, 2017 ICC (Existing Buildings): 30" wide by 48" deep min.
 - 2017 ICC (New Buildings): 30" wide by 52" deep min.
 - Toe clearance 17" min. to 25" max.
 - Toe clearance at least 9" above finish floor for full depth.

C: Kneespace not required for ages 5 and under if 30 x 48 inches (760 x 1220mm) clear floor space for parallel approach available



Compliant Restroom Accessories

- Controls must:
 - Be operable with one hand, without tight grasping, pinching of the fingers, or twisting of wrist
 - Require less than 5 lbs. of force.
- Solutions can include:
 - Hygienic, touchless, sensor operated dispensers and faucets
 - Compliant manual accessories



Touchless, ADA-Compliant Solutions from Bobrick



B-3725
TrimLineSeries™
ADA Recessed
Hand Dryer



B-29744
Automatic Roll
Paper Towel
Dispenser



B-38030
TrimLineSeries™
3-in-1 Unit



Designer Series Soap Dispensers & Faucets
Shown: Matte Black B-852 Soap Dispenser,
B-8872 Faucet

Accessibility Solutions that Extend Beyond Minimum ADA Requirements

Bobrick Accessories to Meet ADA Leading Edges Requirements



B-3725



B-7125



B-3706

Accessibility Solutions that Extend Beyond Minimum ADA Requirements

Baby Changing Stations

- Increasingly found in all restroom types, including family restrooms
- 73% of parents are more likely to visit businesses with baby changing stations
- BABIES Act (2016) requires all public, federal buildings to have baby changing stations in both men's and women's rooms
- According to a survey commissioned by Proctor & Gamble, 9 out of 10 dads have gone into a public restroom that has not had a changing station



Koala Kare's Extensive Selection



KB310



KB311



KB200-SS

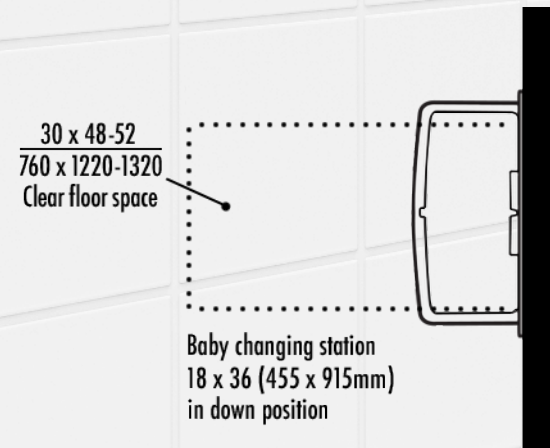
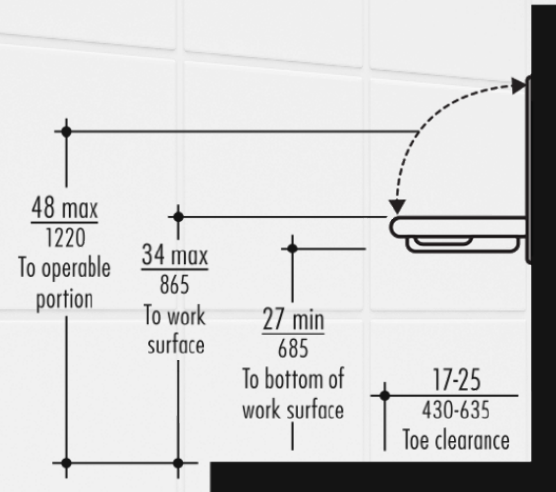


KB112-01RE

Accessibility Solutions that Extend Beyond Minimum ADA Requirements

Baby Changing Stations

- Locate to provide for needs of users but not prevent other patrons (including those in wheelchairs) access to fixtures and dispensers in restroom.
- Position baby changing stations in corners or add screens on open sides that extend below 27" above floor for the full depth of the open changing bed.
- Not all vertical units are ADA compliant. Check documentation from the manufacturer.



Adult & Special Needs Changing Stations

- Becoming more common in the U.S.
- Likely Locations
 - Airports
 - Shopping Centers
 - Schools
- Safely accommodates individuals and their caregivers
- Adjustable height changing stations ensure inclusivity and comfort for loved ones with disabilities
- Legislation enacted in AZ and CA. Pending in other states

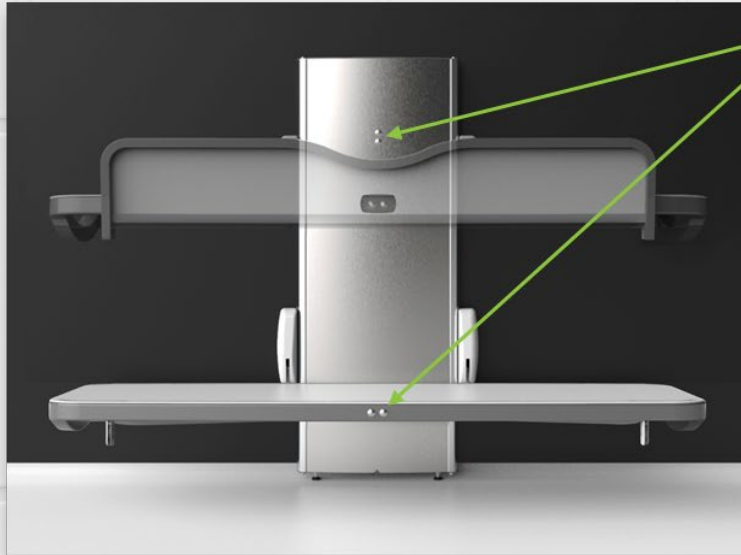


Koala Kare Special Needs Changing Station



Accessibility Solutions that Extend Beyond Minimum ADA Requirements

Special Needs Changing Stations



- Single hand operation through integrated “recessed” button controls for height adjustment on station and wall panel.
- Battery Back-up in case of power outage for safe emergency lowering
- Height adjustability allows for safe lateral transfer

Special Needs Users

- Individuals who are obese
- People with stability or balance issues
- Elderly or frail individuals
- Parents with infants
- Users of mobility equipment
- People who are short, tall, large or heavy
- People with injuries and health problems
- People with psychological and behavioral disabilities



Bariatric Design

- Obesity and bariatric design requirements
 - Specialized toilets: 1,000+ lbs
 - Toilet seat height: 17"-19"
 - Minimum turning radius: 6'
- Small things matter for seniors, the handicapped and obese.
 - Mechanisms must be easily operated



Bariatric Grab Bars

- Obese individuals who experience a fall are more likely to be hospitalized longer
- Ensure that:
 - Bariatric grab bars can withstand 750 pounds
 - The wall can withstand the weight—work with an engineer when necessary



Learning from Healthcare Facilities

- Healthcare facilities utilize innovative solutions and design principles:
 - Recessed receptacles
 - Hooks and shelves
 - Larger toilet compartments and passageways
 - Larger restrooms
 - Resilient finishes
 - LED-assisted amenities



Potential Hygiene Solutions

- Touchless handwashing and drying
- Counter-mounting accessories
- Appropriate hand drying solutions
- Waste/diaper disposal and dispensers
- Touchless plumbing fixtures
- Toilet compartment door latches to operate without grasping



PRIVADA® Cubicles Hands-Free Door Latch

Maintenance Strategies

- Smooth, non-porous, easily cleanable surfaces
- Anti-microbial surfaces
- Universal consumables, such as soap and paper towels
- Counter-mounted, top-fill soap dispensers
- Single towel dispensing rod accessories
- Adjustable towel lengths
- Multiple hand drying options



Other Comfort Amenities

- Ample clear floor space
- Modified lighting
- Low-noise hand dryers
- Waste receptacles
- Mobile device storage



B-635 Klutch Mobile Device Holder

Social Responsibility

- Supports return on investment, competitiveness, inclusiveness and loyalty
- Increase the number of public restrooms, their size and providing more varied types of restrooms
- Demonstrate commitment to inclusivity
- A direct way to help build healthy, sustainable, equitable communities



**Thank you for your interest in Multigenerational
Restroom Design.**

**Please contact Bobrick Washroom Equipment, Inc.
or Koala Kare Products with any questions.**



BUILDING VALUE SINCE 1906

